

NR2C2 Antibody (C-term)
Affinity Purified Rabbit Polyclonal Antibody (Pab)
Catalog # AP19331b

Specification

NR2C2 Antibody (C-term) - Product Information

Application	WB, IF, E
Primary Accession	P49116
Other Accession	P55094 , P49117 , NP_003289.2
Reactivity	Human
Predicted	Mouse, Rat
Host	Rabbit
Clonality	Polyclonal
Isotype	Rabbit IgG
Calculated MW	65414
Antigen Region	438-466

NR2C2 Antibody (C-term) - Additional Information

Gene ID 7182

Other Names

Nuclear receptor subfamily 2 group C member 2, Orphan nuclear receptor TAK1, Orphan nuclear receptor TR4, Testicular receptor 4, NR2C2, TAK1, TR4

Target/Specificity

This NR2C2 antibody is generated from rabbits immunized with a KLH conjugated synthetic peptide between 438-466 amino acids from the C-terminal region of human NR2C2.

Dilution

WB~~1:1000

IF~~1:10~50

E~~Use at an assay dependent concentration.

Format

Purified polyclonal antibody supplied in PBS with 0.09% (W/V) sodium azide. This antibody is purified through a protein A column, followed by peptide affinity purification.

Storage

Maintain refrigerated at 2-8°C for up to 2 weeks. For long term storage store at -20°C in small aliquots to prevent freeze-thaw cycles.

Precautions

NR2C2 Antibody (C-term) is for research use only and not for use in diagnostic or therapeutic procedures.

NR2C2 Antibody (C-term) - Protein Information

Name NR2C2

Synonyms TAK1, TR4

Function Orphan nuclear receptor that can act as a repressor or activator of transcription. An important repressor of nuclear receptor signaling pathways such as retinoic acid receptor, retinoid X, vitamin D3 receptor, thyroid hormone receptor and estrogen receptor pathways. May regulate gene expression during the late phase of spermatogenesis. Together with NR2C1, forms the core of the DRED (direct repeat erythroid-definitive) complex that represses embryonic and fetal globin transcription including that of GATA1. Binds to hormone response elements (HREs) consisting of two 5'-AGGTCA-3' half site direct repeat consensus sequences. Plays a fundamental role in early embryonic development and embryonic stem cells. Required for normal spermatogenesis and cerebellum development. Appears to be important for neurodevelopmentally regulated behavior (By similarity). Activates transcriptional activity of LHCG. Antagonist of PPARA-mediated transactivation.

Cellular Location

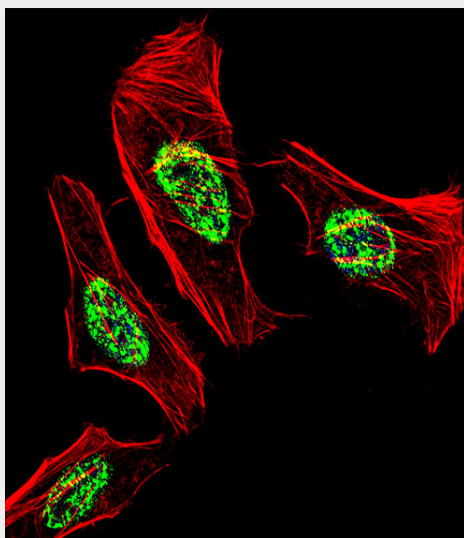
Nucleus {ECO:0000255|PROSITE-ProRule:PRU00407, ECO:0000269|PubMed:10644740, ECO:0000269|PubMed:15302918}

NR2C2 Antibody (C-term) - Protocols

Provided below are standard protocols that you may find useful for product applications.

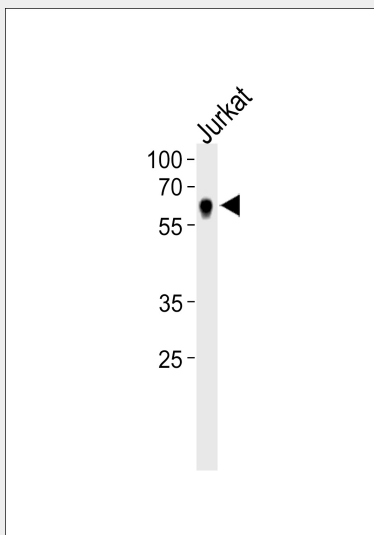
- [Western Blot](#)
- [Blocking Peptides](#)
- [Dot Blot](#)
- [Immunohistochemistry](#)
- [Immunofluorescence](#)
- [Immunoprecipitation](#)
- [Flow Cytometry](#)
- [Cell Culture](#)

NR2C2 Antibody (C-term) - Images



Fluorescent confocal image of HeLa cell stained with NR2C2 Antibody (C-term)(Cat#AP19331b). HeLa cells were fixed with 4% PFA (20 min), permeabilized with Triton

X-100 (0.1%, 10 min), then incubated with NR2C2 primary antibody (1:25, 1 h at 37°C). For secondary antibody, Alexa Fluor® 488 conjugated donkey anti-rabbit antibody (green) was used (1:400, 50 min at 37°C). Cytoplasmic actin was counterstained with Alexa Fluor® 555 (red) conjugated Phalloidin (7units/ml, 1 h at 37°C). Nuclei were counterstained with DAPI (blue) (10 µg/ml, 10 min). NR2C2 immunoreactivity is localized to Nucleus significantly.



NR2C2 Antibody (C-term) (Cat. #AP19331b) western blot analysis in Jurkat cell line lysates (35ug/lane). This demonstrates the NR2C2 antibody detected the NR2C2 protein (arrow).

NR2C2 Antibody (C-term) - Background

Members of the nuclear hormone receptor family, such as NR2C2, act as ligand-activated transcription factors. The proteins have an N-terminal transactivation domain, a central DNA-binding domain with 2 zinc fingers, and a ligand-binding domain at the C terminus. The activated receptor/ligand complex is translocated to the nucleus where it binds to hormone response elements of target genes (Yoshikawa et al., 1996 [PubMed 8661150]).

NR2C2 Antibody (C-term) - References

Rose, J.E., et al. Mol. Med. 16 (7-8), 247-253 (2010) :
Srivastava, R., et al. J. Biol. Chem. 285(15):11100-11105(2010)
Ear, T., et al. J. Immunol. 184(7):3897-3906(2010)
Suzuki, S., et al. J. Biol. Chem. 285(7):4441-4446(2010)
Huang, Y.H., et al. J. Cell. Physiol. 222(2):347-356(2010)